

2011

annual REPORT

LETTER FROM

the Executive Director



Dear Friends,

What an amazing time it has been for Break the Cycle! In 2011, Break the Cycle was named one of Chase's Top 100 charities and we were proudly selected for inclusion in the Catalogue for Philanthropy: Greater Washington. These important achievements have helped introduce Break the Cycle's mission to new friends and supporters around the country.

We took youth activism to new heights with innovative new resources and campaigns. We "ruled the schools" during Teen Dating Violence Prevention and Awareness Month with our amazing Let Your Heart Rule campaigns. Let Your Heart Rule engaged students nationwide to make their voice heard through PSA contests, peer-to-peer presentations and community events which promoted healthy relationships. Our activities in February were supported by our friends at the U.S. Department of Education, MTV, Dr. Phil and Verizon Wireless.

Affirming our role as the leading voice for LGBTQ youth experiencing dating abuse, we expanded our Hear My Voice campaign beyond Los Angeles to reach young people in Austin and Chicago -- ensuring they know how to build healthier relationships and safely escape abusive ones. Break the Cycle also assumed leadership over the Show Me Love DC campaign which provides LGBTQ youth in Washington, DC with access to critical help, resources and information.

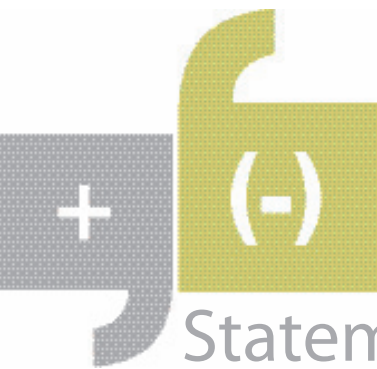
And with all of these amazing accomplishments, our most significant achievement is that Break the Cycle cemented a vital relationship with the National Dating Abuse Helpline. Together, we launched the new loveisrespect.org which marries our extensive campaigns and resources with the Helpline's 24/7 chat, phone and text for help crisis services. [Loveisrespect.org](http://loveisrespect.org) is the single most important resource for teens and young adults experiencing dating abuse, inspiring them to create a culture of healthy relationships.

Thank you for continuing to stand alongside us as we build a community free from dating abuse.

Sincerely,


Marjorie Gilberg
Executive Director





Statement of...

CASH FLOWS

CASH FLOWS FROM OPERATING ACTIVITIES

	<u>2011</u>
Change in net assets	\$134,095
Adjustments to reconcile increase (decrease) in net assets to net cash provided (used) by operating activities	
Depreciation	2,347
(Increase) decrease in assets	
Accounts receivable	(193,549)
Prepaid expenses	4,389
Increase (decrease) in liabilities	
Accounts payable	(29,714)
Accrued vacation	9,264
Net cash (used) by operating activities	<u>(73,046)</u>

CASH FLOWS FROM INVESTING ACTIVITIES

Principal received on mortgage note receivable	160,828
Mortgage notes interest receivable	58,596
Mortgage notes interest receivable	(8,527)
Net cash (used) by investing activities	<u>210,897</u>

CASH FLOWS FROM FINANCING ACTIVITIES

Proceeds from loans payable	<u>(80,000)</u>
-----------------------------	-----------------

NET DECREASE IN CASH

57,851

CASH AND CASH EQUIVALENTS, beginning of year

12,872

CASH AND CASH EQUIVALENTS, end of year

\$70,723

TOTAL INCOME

\$1,324,905

FINANCIAL POSITION

ASSETS

Cash assets

Cash and cash equivalents	\$70,723
Accounts receivable	224,685
Mortgage notes receivable - current	160,828
Mortgage notes interest receivable	-
Prepaid expenses	-

Total current assets

304,629

Property and equipment - net	11,936
Deposits	10,031

TOTAL ASSETS

\$326,596

LIABILITIES

Current liabilities

Accounts payable	\$4,246
Loans payable – related parties	-
Interest payable	-
Accrued vacation	21,943

TOTAL LIABILITIES

\$26,189

NET ASSETS

Unrestricted net assets	126,515
Temporarily restricted net assets	173,892

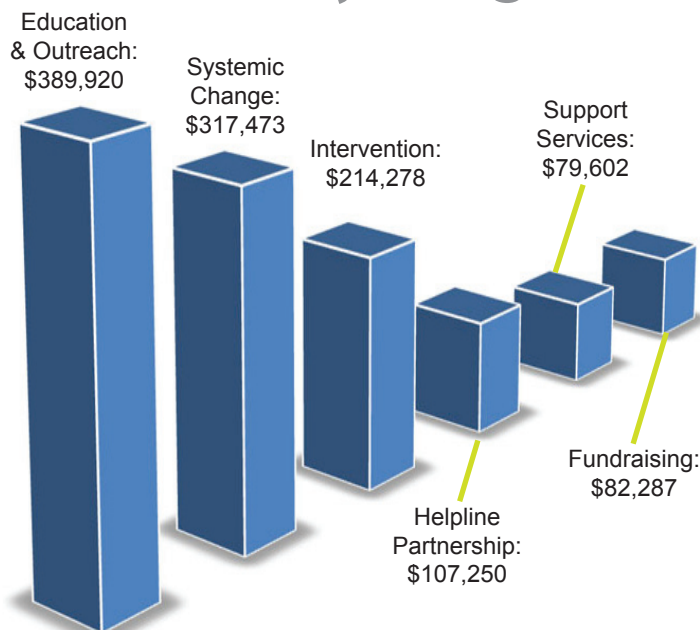
TOTAL NET ASSETS

\$300,407

TOTAL LIABILITIES AND NET ASSETS

\$326,596

Expense by Program



Thank you to our Donors

Break the Cycle gratefully acknowledges our generous donors. The listing below reflects donors with cash contributions of \$250 or more in 2011.

\$25,000+

The Ahmanson Foundation
American Happenings
DC Department of Human Services
DC Office of Victim Services
United States Department of Justice
Hazelden
JPMC Contribution Acknowledgment
The RGK Foundation
Silk Trust
Verizon Wireless Hopeline-National

\$10,000 - 24,999

A&E Television Networks
Jenner & Block LLP
The Morris and Gwendolyn Cafritz Foundation
Verizon Foundation - Southern California

\$5,000 - 9,999

Diann Ackard
Rachel Barchie
Cathay Bank
CMM, LLP
The David Geffen Foundation
Gloria and Joseph Simons Fund
Greenberg Glusker
Macy's Corporate Services, Inc.
Morrison & Foerster Foundation
Northrop Grumman

\$2,500 - 4,999

Jessica Aronoff
Joanne Caruso
Mike Catalano
Fox Entertainment Group
Futures Without Violence
Jacque Gilberg
HH Medstar Health, Inc/TAPP Program
Latin American Youth Center
Long Beach Lesbian and Gay Pride Inc.
Majestic Realty Co. Foundation
Suzanne Morris
Christine Murphy
Paul Hastings
Princess Cruises
Sam & Amy Pryor
Deborah Rudolph
Studley, Inc.
Youth Service America

\$1,000 - 2,499

Andrew Weiss Gallery
Lisa Bonner
Fallon Buckelew
Denton County Friends of the Family
DV Coordinating Council
Michael & Risa Green
Andrea Hall

Jennifer Laforcade Powells
McConnell AFB Family Advocate Program
Darlene Mowrey
Gloria & Bill Newton
The Raney Family Fund at Schwab Charitable Fund
Roll Giving
Safe Harbor, Inc.
Soroptimist International of Greater Santa Clarita
Sullivan Properties Management
A Woman's Place

\$500 - 999

Susan Acquista
Catalogue for Philanthropy: Greater Washington
Barbara Coad
Domestic Violence Crisis Center
Caryn Donly
Draper Consulting Group
Bradley Fine
Groupon
Rose Ann Hall
Harman Cain Family Foundation
Amos Hartston
Hogan & Lovells US LLP
Mark Holden
Maggie Hwang
John Doyle General Construction
Michael Kemps
Jeff Eyrich
Colleen Gallop
Latham & Watkins
Caroline Lieber
Margaret Lodise
Nevada Network Against DV
Jake Patton
Tim Reuben Raucher & Blum
Heather Richardson
Lori Simms
Soroptimist International of L.A. West
Soroptimist International LA West/Santa Monica
Michael & Dounia Turrill
Union Wesley African Methodist Episcopal Zion
Unitarian Universalist Church
Vera Institute of Justice
Wells Fargo Bank, N.A.
Marina Wong

\$250- 499

Kenneth Basin
Lieschen & Peter Bierstedt
Keith Brauneisen
Vicki Briskman
Christine & Alan Buckelew
Bill and Connie Cameron
Elaine Carolyn Carr
Kanti Charugundla

Claudia Taylor Johnson High School
Vin Di Bona Productions
Melissa Dutcher
Ellyn & Larry Elson
Paul Entis
Michael Garabed
Bethany & Andy Gauvreau
Hamilton & Lauren Gilberg
Wendy Goldring
Rob Gray
Jodi & Robbie Groff
Susan & Howard Groff
Audrey & Paul Hanneman
Angela Haskins
Jeanette Holden
Ken & Gwynne Holden
Joe Keenan & Jayzen Patria
April Kobus
Richard Lieber
Jessica Little
James Mahan
Notre Dame Academy
Cristin O'Leary & Sigall Rave
O'Melveny & Myers LLP
Annette Patterson
Jan Perry
Mae & Ben Philpott
Elsie Young Pon
Dyanne & Dan Purcell
Gayle Gullett
Richard Romano
Christibelle & Daniel Salazar
Scott Sorochnik
Jeff Spahr
Michelle Fay
Terry Weeks
Timeisha Winfield
Craig & Brenda Frazier

Gifts were made to Break the Cycle in tribute to:

Akhila Ananth
Cheri Law
Cristina Escobar
Cristin O'Leary
Diann Ackard
Jacque Gilberg
Jessica Aronoff
Jessica Little
Joanne Caruso Zaccaro
Juley Fulcher
Katie Chin
Lauren Astley
Marjorie Gilberg
Mediha Din
Mike Catalano
Rachel Wilkes Barchie
Roger Gonzalez
Sam Pryor

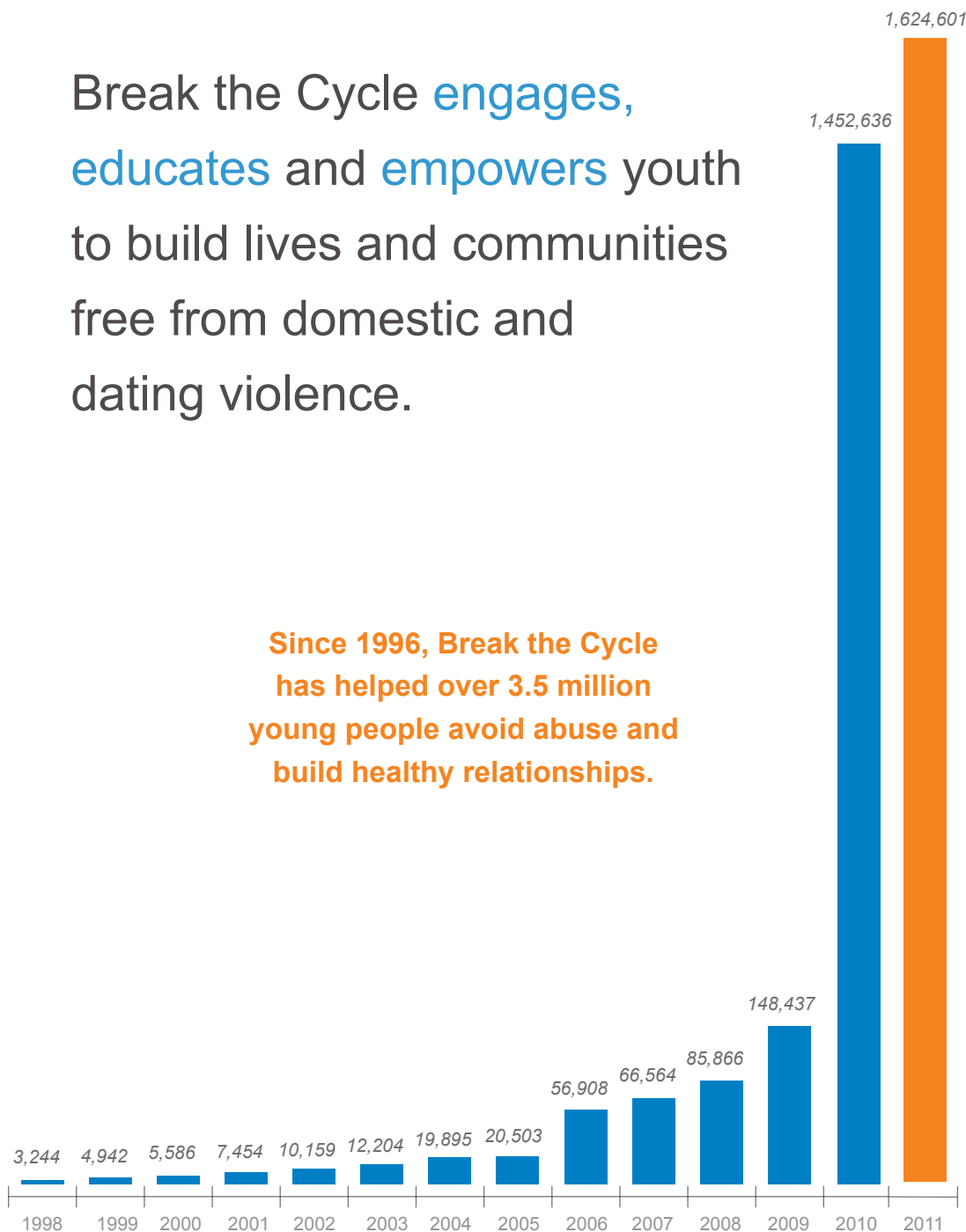
The following gifts were made in memorial:

Haley
Allison Myrick
Lenore and Lee Edson

Every effort has been made to ensure the accuracy of this listing. Please accept our apologies if there are any errors or omissions and contact our office with corrections. Thank you.

Break the Cycle engages, educates and empowers youth to build lives and communities free from domestic and dating violence.

Since 1996, Break the Cycle has helped over 3.5 million young people avoid abuse and build healthy relationships.



www.breakthecycle.org

2011 BOARD OF DIRECTORS

Diann Ackard, PhD, LP, FAED
Psychologist & Adjunct Assistant Professor – University of Minnesota

Lisa Bonner, Esq.
Attorney – Bonner Law, P.C.

Joanne Caruso
Partner – Baker & Hostetler LLP

Mike Catalano
Senior Vice President – Studley, Inc.

Jennifer A. Laforcade
Senior Vice President and Director, Human Resources – Cathay Bank

Suzanne Morris
Vice President, West Coast Technology Operations – Home Box Office

Christine Murphy
Director of Sales Administration – WellPoint

Samuel R. Pryor, Esq.
Special Counsel, Entertainment and Media – Retired

Mary-Christine (M.C.) Sungaila, Esq.
Partner – Horvitz & Levy

Paul Vindigni
Partner – Tatum, LLC

Rachel Wilkes-Barchie
Attorney – Greenberg Glusker Fields Claman & Machtinger LLP

5777 W. Century Blvd., Suite 1150
Los Angeles, CA 90045
310.286.3383

P.O. Box 21034
Washington, DC 20009
202.824.0707